



Information Circular 2[#]

(CF02INFO2/2-02)

Chief Executive & Event Director

Bill Ronald, O.A.M.

Phone: 61 2 9804 6995
Fax: 61 2 9874 6168
Mobile: 61 0403 267 330
email: billron@zip.com.au

This is the **second** information circular to update you on progress toward the 2002 Commonwealth Fencing championships – CF02

A change in dates! - 19 – 24 November 2002

We are sorry that we have had to change the dates due to venue availability. The change has been made with the approval of the CFF and we trust that with nine months notice it does not cause you any inconvenience.

19 – 24 November 2002 is the revised period for the event, which is now one week later than previously advised. **There will be no further change to these dates!** (Previous dates advised were 12 –17 November 2002)

Location – Newcastle, New South Wales

The good news is that we have secured a very good host city relationship with the Newcastle and Hunter Region in the State of New South Wales for the staging of the event in the harbour and beachside **City of Newcastle**.



The **City of Newcastle** is Australia's sixth largest city, and is the largest non-capital urban area in the nation.

With a population of 316,500 people it is located in the Hunter Region of New South Wales with a regional population of 546,400 and a total catchment of 1.2million.

November Weather

Temperature: Max 24 c Min 17 c

Humidity: 67% - 71%

Sunrise: 0541hrs Sunset: 1935hrs

Location: Long 151°48'E Lat 32°55S

Time zone: +11hrs (Summertime)

The Newcastle Hunter Region is just 1.5 hours freeway drive north of Sydney. A premier tourist destination, this Pacific Coast region offers: beaches, lakes, national parks, every conceivable sporting opportunity, and is one of Australia's premier winegrowing areas.

Venue

The **Newcastle Entertainment Centre** has been selected as the Venue for CF02.



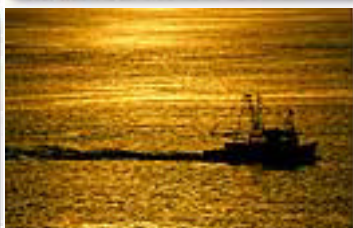
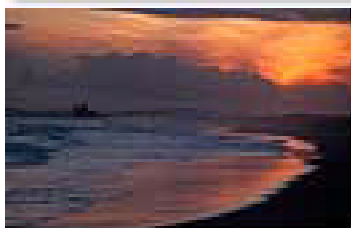
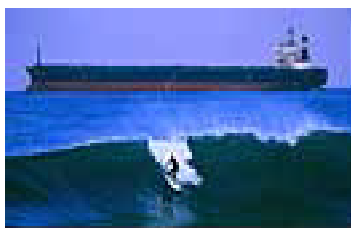
The **Newcastle Entertainment Centre** is Australia's most flexible multi-purpose venue. Officially opened in June 1992, the state-of-the-art facility offers 5,000 square metres of clear span floor space and has a capacity of 6,192 for entertainment styled events. The Centre has hosted a variety of events including rock and popular concerts, circuses, ice shows, school spectaculars, basketball, boxing, indoor supercross, exhibitions, conventions and functions **and now – Fencing!**

You will fence in a prestige venue, with concentrated media attention focussing on our sport, and have the opportunity to experience the beautiful late spring weather in a Pacific Coast City, which features a unique combination of....

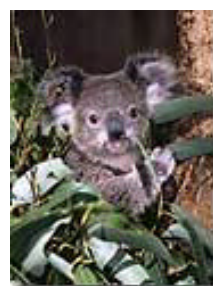
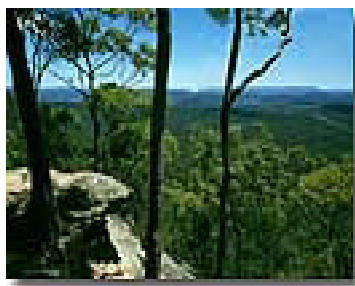
.... Harbour City - living and dining



.... Beach and water lifestyle

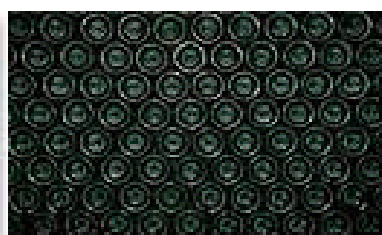
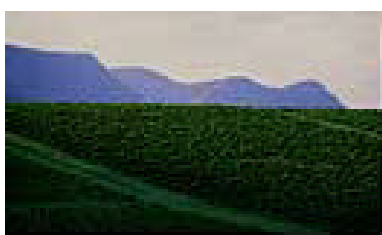


.... Breathtaking national parks & icons of Australian fauna



and

Some of Australia's most renowned winegrowing areas.



Organisation and responsibilities

Event Management:

Event Managers – contact Bill Ronald

Event Rules:

As determined by the Commonwealth Fencing Federation and managed by the Directoire Technique

Eligibility:

Commonwealth Fencing Federation

Rules for Competition, Weapon Control, and Equipment:

FIE Rules for Competition

Accommodation Travel & Logistics, Entries

Event entry fees will cover your Group Transfers to and from Sydney International Airport and shuttle buses to and from **official accommodation** and the competition venue.

Specialists in Sport Logistics, **Sport Moves**, have been retained to ensure maximum inbound service is provided to CFF members. A range of accommodation and transport options will be sourced at best available prices and full details will be advised to you in Circular 3# which will also call for your initial indication of entries.

We are truly excited that we have a superb venue in an ideal location and look forward to welcoming you all to Newcastle Australia for CF02.