

International Event

6 days of Competition

12 Gold Medals



Event Overview

Commonwealth Fencing 2002 Pty Limited
(proposed entity)

Organised Under Authority of the
Commonwealth Fencing Federation



CF2002 - Commonwealth Fencing 2002

We look forward to welcoming you to Australia for six days of elite sporting competition. The Commonwealth's best fencers will contest twelve events with *two Gold Medals decided each night of competition.*

Responsible Body

The event has been awarded to Australian Fencing (AFF Inc.) by the Commonwealth Fencing Federation (CFF) the body recognised by the Commonwealth Games Federation as the official federation of Commonwealth Fencing Nations.

CF2002 is supported by NSW Major Events, NSW Sport & Recreation and the Newcastle and Hunter Events Corporation.

Event Management

The Directors and functional managers of Commonwealth Fencing 2002 are drawn from the team that presented the outstanding Sydney 2000 Olympic event and from the AFF Executive.

CEO and Event Director, Bill Ronald, OAM, was SOCOG Competition Manager and for 16 years President of AFF Inc. He is an FIE Executive Committee Member and President of the Oceanic Fencing Confederation.

Fencing at the Sydney 2000 Olympic Games attracted sellout audiences (5000 capacity) and was described by the Federation Internationale d'Escrime as -

"The best Fencing event - ever."

Competing Nations

Current CFF membership comprises:

Australia, Canada, England, Guernsey, India, Isle of Man, Malaysia, New Zealand, Northern Ireland, Scotland, South Africa, Singapore and Wales.

Event Information

Dates

(confirmed on International Federation Calender)

19 - 24 November 2002

Competition Duration

Eight Days of Training & Competition

- Two official training days 17 -18 November
- Six days of competition 19 - 24 November

Format

Twelve Events

Two Gold Medals decided on each of six nights of competition:

Six Individual Events: (5 entries per nation per event)

- Foil, epee, sabre for women
- Foil, epee, sabre for men

Six Team Events: (1 team of 4 per nation per event)

- Foil, epee, sabre for women
- Foil, epee, sabre for men

Two sessions daily

- Eliminations - Morning and afternoon sessions
- **Medal Finals** - Evening

Event Population

Commonwealth Fencing 2002 will attract an event population of over 400 people to the Host City:

- 200 Athletes
- 100 Family and supporters
- 50 Team Officials
- 50 Local and national volunteers
- 10 International & Australian Referees
- 8 Event Management personnel
- 4 International Committee members
- 4 International & national media

Commonwealth Fencing 2002 will be contested by over 200 of the top fencers in the Commonwealth including World top 32 athletes in each of the men's and women's events.

Accommodation

Inbound Travel Logistics specialists, **Sport Moves**, have been retained to ensure maximum inbound service and potential.

Venue

Newcastle Entertainment Centre

Three Competition Areas

Commonwealth fencing will take place in three phases of competition. For each of the twelve events there are:

Finals

The finals (medal rounds) will be contested on one FOP, elevated 1.2 metres, which is located on a platform with a curtain backdrop and one sided, theatre style, grandstand seating for 1500 spectators. This follows the Sydney 2000 configuration.

The Finals session is approximately 2 hours duration including the medal ceremonies.

Highly visible Sponsor Logo and recognition is available on the backdrop, the face of the podium, and the FOP surface (**Area A**)

**Attractive -
Media, and crowd friendly. . . .**



**Finals - Two Gold Medals decided on each of
six nights of competition. . . *Intimate, theatre style***

Direct Elimination phase

Direct Elimination rounds will be contested on four, colour coded, fields of play covering 750m² of floor space. Spectators will move to watch their match of interest with a total of 500 seats available around the perimeter, either side of the FOP area.

Sponsor Logo and recognition will be available on the colour surrounds, the timing/scoring equipment and FOP surrounds

Direct Elimination Rounds & Quarter Finals . . . *Colour coded Field of Play*



view of each competition court

spectators move to watch the match they want

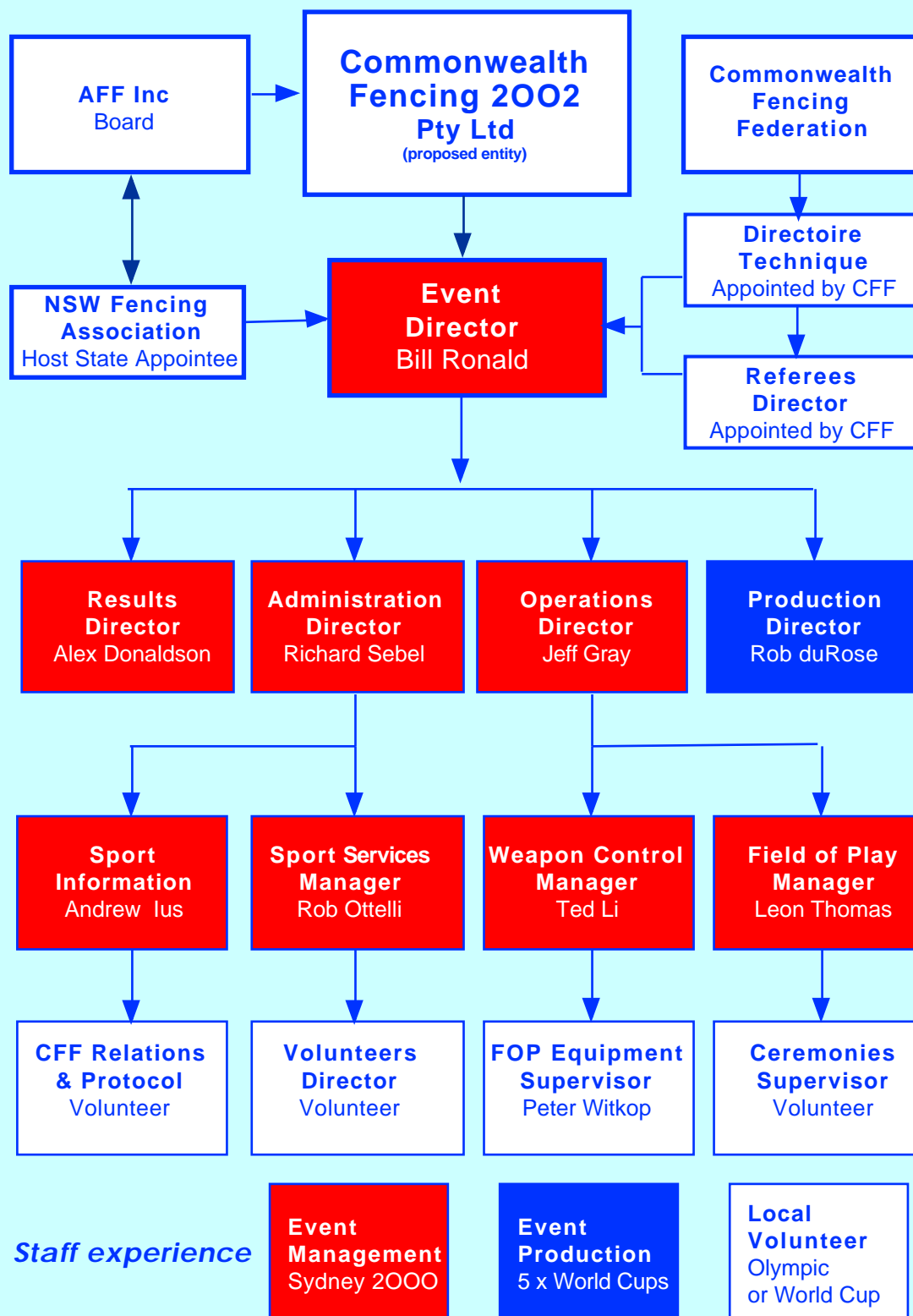


Elimination Rounds of Pools

Eight fields of Play are used in this phase of competition. Spectators move to watch their match of interest with a total of 400 seats available around the perimeter.

Sponsor Logo and recognition is available on the timing/scoring equipment and FOP surrounds.

an event experienced organisation . . .





Event Management

PO Box 26 Eastwood NSW 2122

Chief Executive & Event Director
Bill Ronald, O.A.M.

Phone: 61 2 9804 6995
Fax: 61 2 9874 6168
Mobile: 61 0403 267 330
email: billron@zip.com.au